















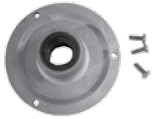

Group:	MFY/MMO	Notes:
Form:	SP1020-MFY/MMO	Refer to SP1020 -DWG for major component drawing.
Date:	July 7, 2017	Refer to TSB-3020 for hardware kit breakdown.
File:	Starter Motor Parts List Section	

Component View	Solenoid Assembly	Drive Assembly	C.E Housing Assembly	Armature Assembly	Field & Frame Assembly	Shift/Nose Hsg Assembly
						
Model	1	2	3	4	5	6
MFY-6714UT	S214102585S	DRA-3002DS	MFY-1102S-S	MBD-2566S-S	MFY-2101S	M014102573S
MMO-6715UT	S214102599S	DRA-3002DS	MFY-1102S-S	MMO-2106S	MFY-2101BS	M014102573S

Component View	O-ring Gasket Kit	Jumper Kit	Brush Holder Assembly	Shift Lever Kit	Thrust Washer Kit	Brush Kit
						
Model	7	8	9	10	11	12
MFY-6714UT	K185104691S	K185104692S	MFY-1564BS	K185104693S	K185104694S	K185104695S
MMO-6715UT	K185104691S	K185104692S	MFY-1564BS	K185104693S	K185104694S	K185104695S

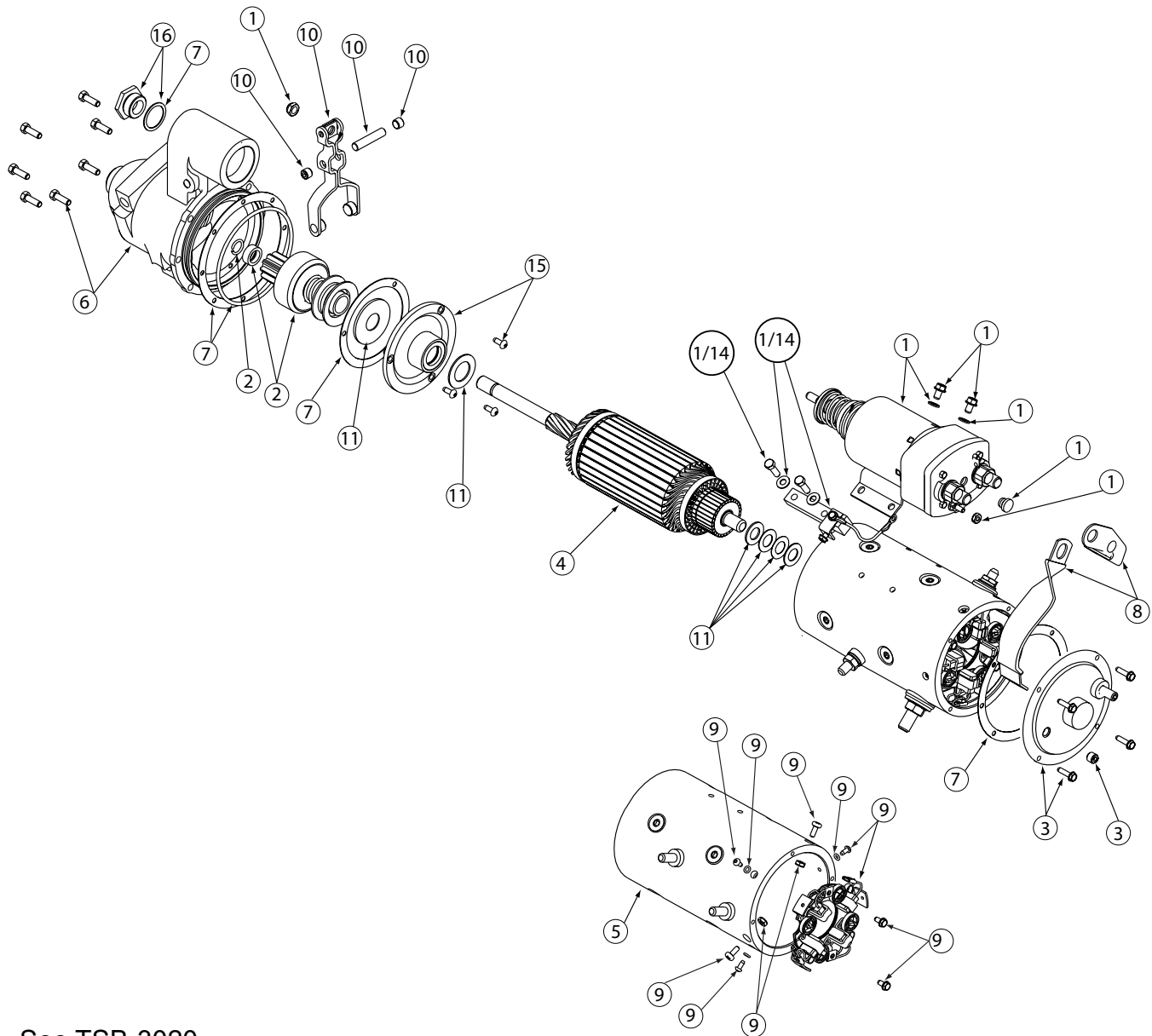
Important: The information contained in this bulletin is intended for use by trained, professional technicians who have the proper tools, equipment, and training to perform the required maintenance described above. This information is NOT intended for 'do-it-yourselfers', and you should not assume that this information applies to your equipment. If you have any questions regarding this information please visit our website at www.prestolite.com, or contact our technical service department at:

Group:	M125R	Notes:
Form:	SP1020-MFY/MMO	Refer to SP1020 -DWG for major component drawing. Refer to TSB-3020 for hardware kit breakdown.
Date:	July 7, 2017	
File:	Starter Motor Parts List Section	

Component View	Hardware Kit	Terminal Block Kit	Intermediate Plate Assy	Shift Housing Plug
				
Model	13	14	15	16
MFY-6714UT	K212104690S	M146103340S	MFY-2130S	K185104696S
MMO-6715UT	K212104690S	M146103340S	MFY-2130S	K185104696S

Important: The information contained in this bulletin is intended for use by trained, professional technicians who have the proper tools, equipment, and training to perform the required maintenance described above. This information is NOT intended for 'do-it-yourselfers', and you should not assume that this information applies to your equipment. If you have any questions regarding this information please visit our website at www.prestolite.com, or contact our technical service department at:

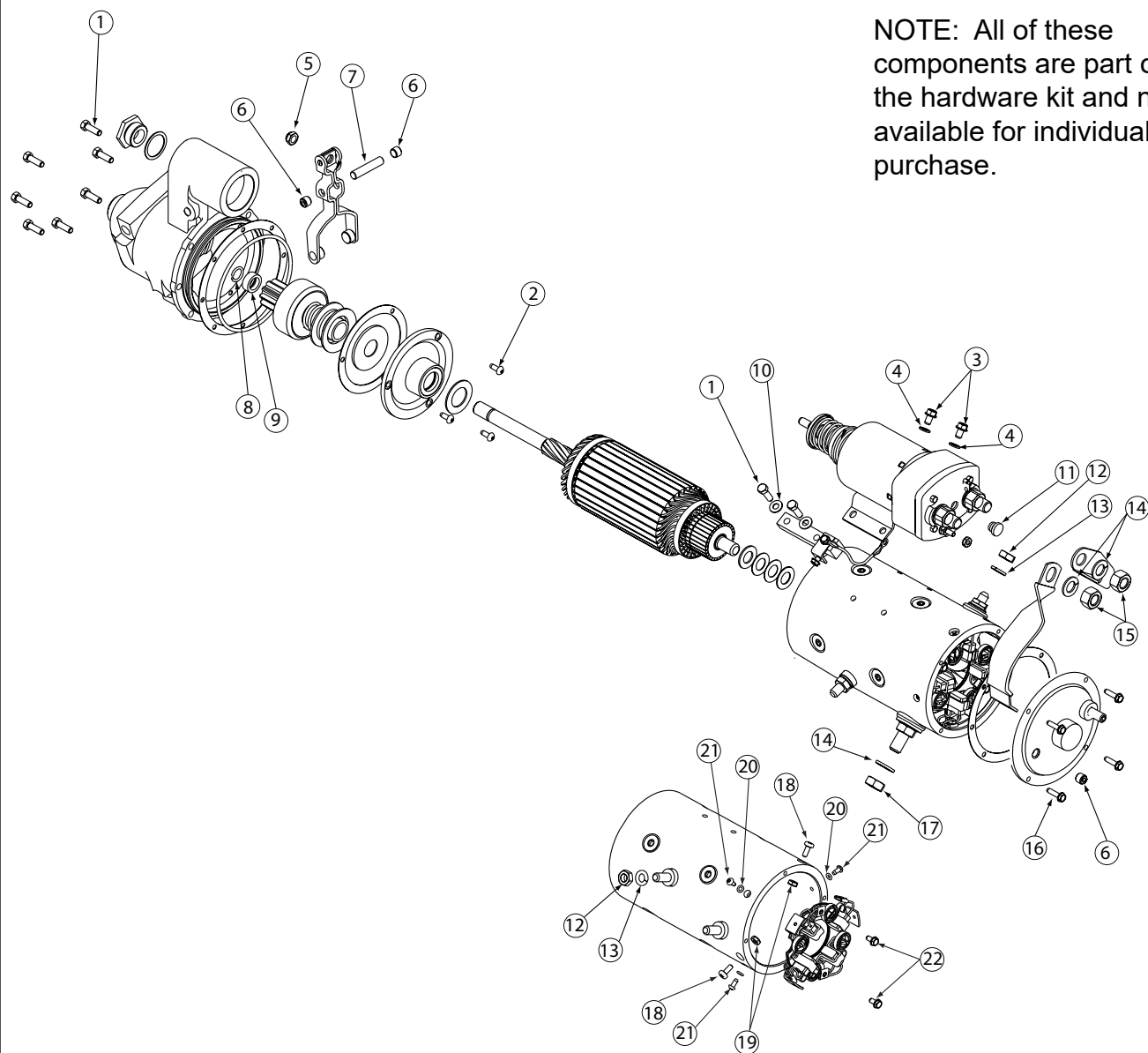
Group:	MFY/MMO Starters	Notes:
Form:	SP1020-DWG	Refer to SP1020 for parts breakdown.
Date:	July 7, 2017	Refer to TSB-3020 for hardware kit breakdown.
File:	Starter Parts List Section	



See TSB-3020
for Hardware Kit
breakdown

Important: The information contained in this bulletin is intended for use by trained, professional technicians who have the proper tools, equipment, and training to perform the required maintenance described above. This information is NOT intended for 'do-it-yourselfers', and you should not assume that this information applies to your equipment. If you have any questions regarding this information please visit our website at www.prestolite.com, or contact our technical service department at:

Source: Leece-Neville Heavy Duty Systems Division - Arcade, NY USA
Date: JULY 7, 2017
Bulletin No: TSB-3020
Models: MFY/MMO-Series Starter Motors
Subject: Hardware Kit for MFY-MMO Series Starter Motors K212104690S



Important: The information contained in this bulletin is intended for use by trained, professional technicians who have the proper tools, equipment, and training to perform the required maintenance described above. This information is NOT intended for 'do-it-yourselfers'; and you should not assume that this information applies to your equipment. If you have any questions regarding this information please visit our website at www.prestolite.com, or contact our technical service department at:

Date: JULY 7, 2017

Bulletin No: TSB-3020

Note: All of these components are part of the hardware kit and not available for individual purchase.

Description	QTY	Key	Where Used
SCREW TAP #6-32	7	1	Attaches field and frame to shift housing assy
Screw #10-32	3	2	Attaches intermediate plate to shift lever assy.
Screw 1/4-20	2	3	Attaches solenoid to starter
Washer, lock 1/4	2	4	Lock washer for Key number 3
Nut, lock	1	5	Attaches solenoid to shift lever
Pipe Plug	3	6	Retain pivot pin
Pivot pin	1	7	Shift lever pivot pin
Snap Ring	1	8	Drive retaining snap ring
Retainer	1	9	Drive Retainer
Washer, flat 1/4	2	10	Flat washer for terminal block assy
Plug	1	11	Used on solenoid
Nut, 3/8	2	12	Jumper strap hardware
Lock Washer 3/8	2	13	Jumper strap hardware
Lock Washer 1/2	3	14	Jumper strap hardware
Nut, 1/2	2	15	Solenoid/ jumper strap hardware
Screw #10-32	4	16	Comm end Assy screws
Nut, 1/2	1	17	Jumper strap hardware
Screw	2	18	Brush screw
Lock Nut	2	19	Brush holder nut
O-Ring	3	20	Brush Screw O-Ring
Screw	3	21	Brush screw
Screw	2	22	Brush screw

Important: The information contained in this bulletin is intended for use by trained, professional technicians who have the proper tools, equipment, and training to perform the required maintenance described above. This information is NOT intended for 'do-it-yourselfers', and you should not assume that this information applies to your equipment. If you have any questions regarding this information please visit our website at www.prestolite.com, or contact our technical service department at: